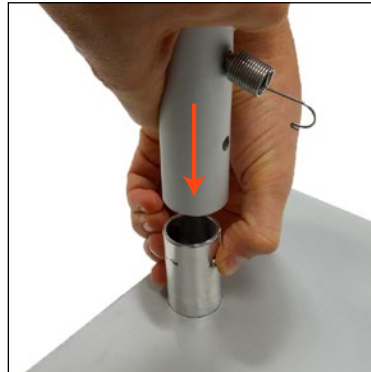


Renew Banner Stand Assembly Instructions

Assembly is the same for all sizes of standard Renew Banner Stands.



1. Assemble Frame perimeter in order of the stickers.



2. Connect frame perimeter to the baseplate.



Note: The spring hooks in each corner will not be used.



3. Pull the graphic over the frame.
Note: To make this easier, you may want to tilt the frame backwards.