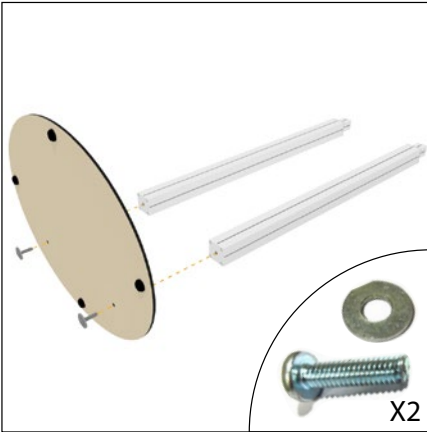
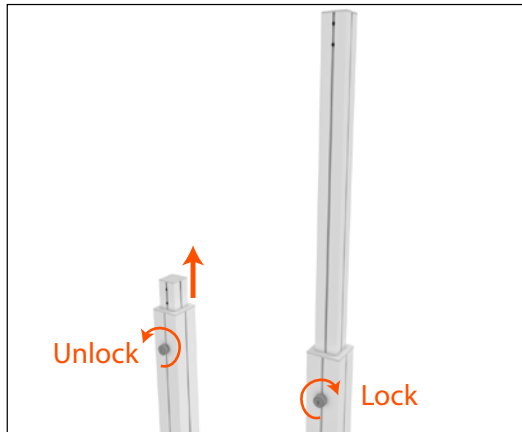


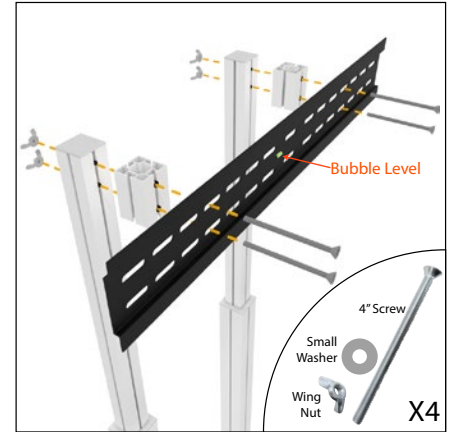
Large Adjustable Monitor Stand (with Standoff Blocks) Assembly Instructions



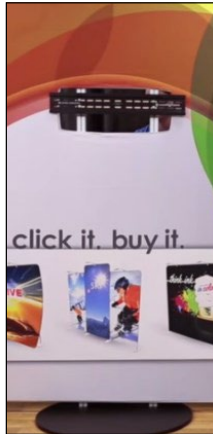
1. Connect column pieces to foot with two large screws and large washers. Stand the display up.



2. Loosen height adjustment knob and extend the columns to desired height. (Eye-height is recommended)



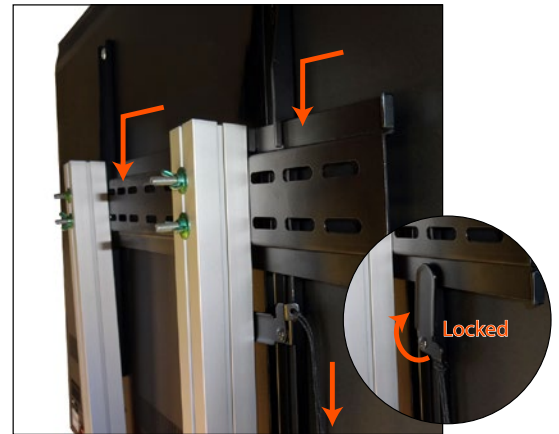
3. Install the standoff blocks and back monitor bracket piece to the front of the columns using four 4" screws, four small washers, and four wing nuts. Hand tighten wing nuts.



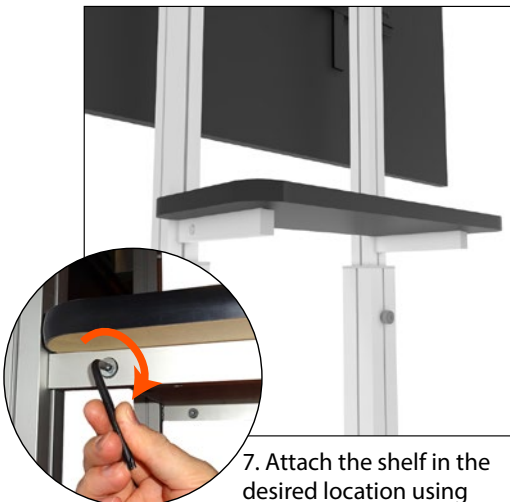
4. Place monitor stand behind cut-through in display. Slide one side of monitor bracket in, then the other.



5. Install monitor brackets to the back of the monitor using appropriate screws for the monitor you are using. Make sure security locks are unlocked.
Note: We recommend monitors that do not exceed 50 lbs.



6. Carefully hang monitor on stand. Pull strings down to lock monitor bracket in place. Tuck strings behind monitor to hide.
Note: Large monitors may take two people to lift onto the stand



7. Attach the shelf in the desired location using the star bit wrench.



8. Cable clips may be used for holding wires out of the way.

