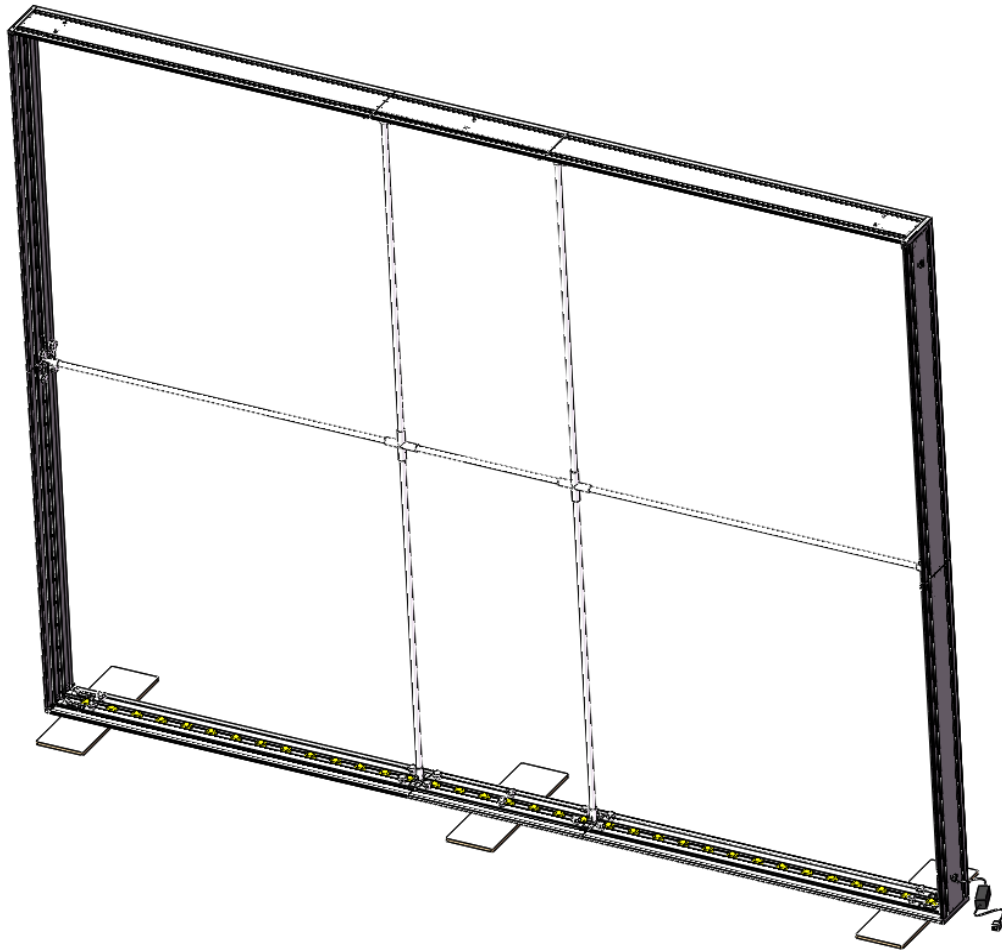


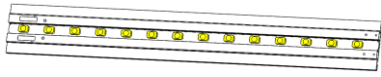
# 10' Prism Backlit Frame



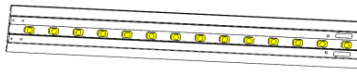
**Frame size: 114 inches x 92 inches**

# Parts for Assembly

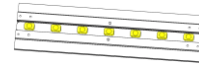
## Set-up requires 2 people



2 - Frame Panels with LED  
Lights (output connection  
on clip end)



2 - Frame Panels with LED  
Lights (input connection  
on clip end)



2 - Middle Frame Panels  
with LED Light Strips



4 - Side Frame Panels



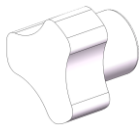
3 - Feet



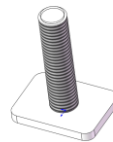
1 - Middle Horizontal  
Support Pole



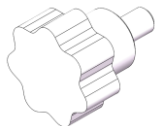
6 - Horizontal and Vertical  
Support Poles



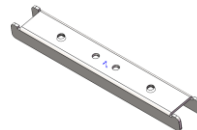
6 - Nuts for Feet



6 - Screws for Feet



24 - Knobs for Flat  
Connecting Brackets

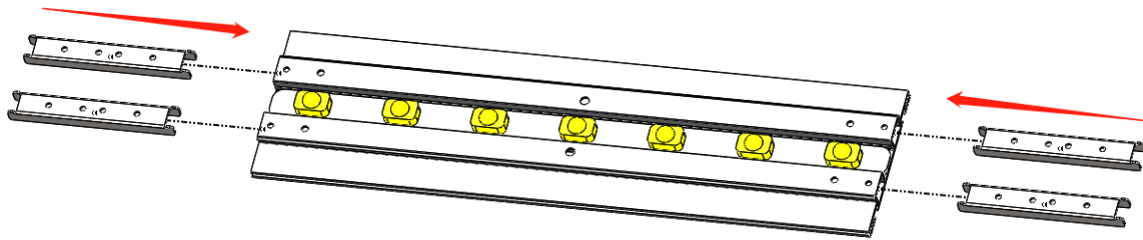


12 - Flat Connecting  
Brackets

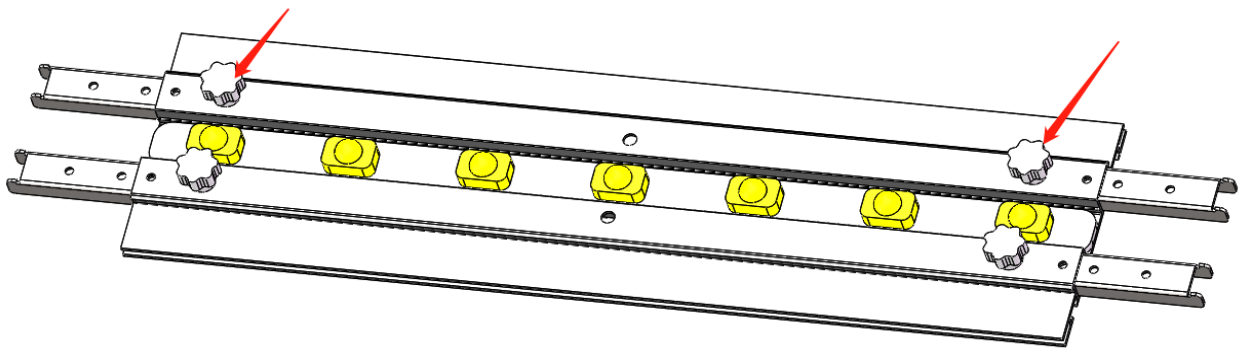


Power Supply

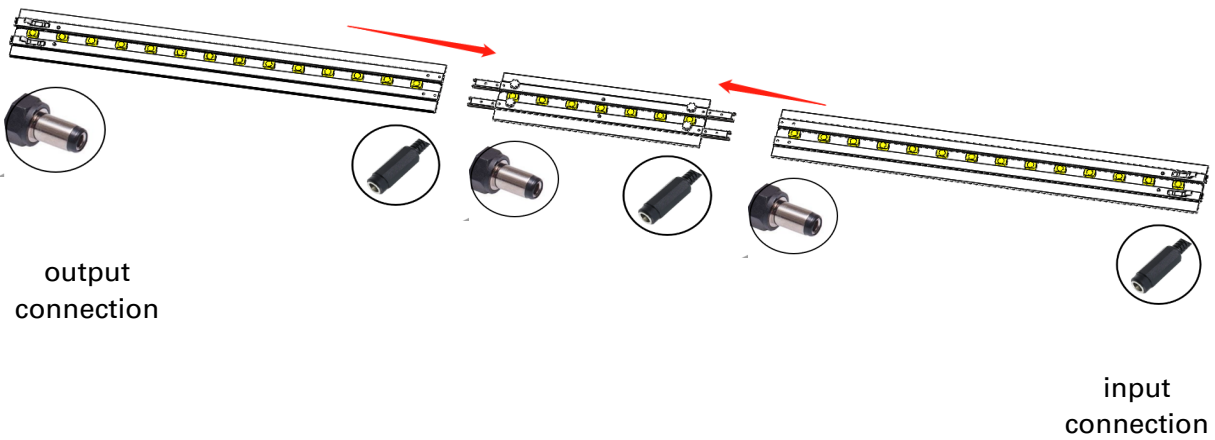
## Step-by-Step Instructions



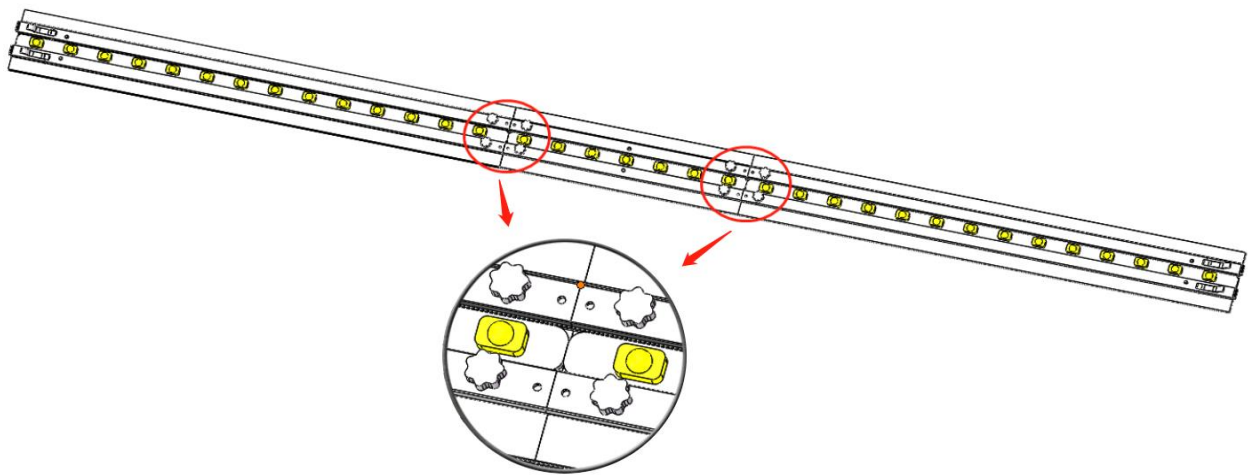
**1:** Insert flat connecting brackets into middle frame panel.



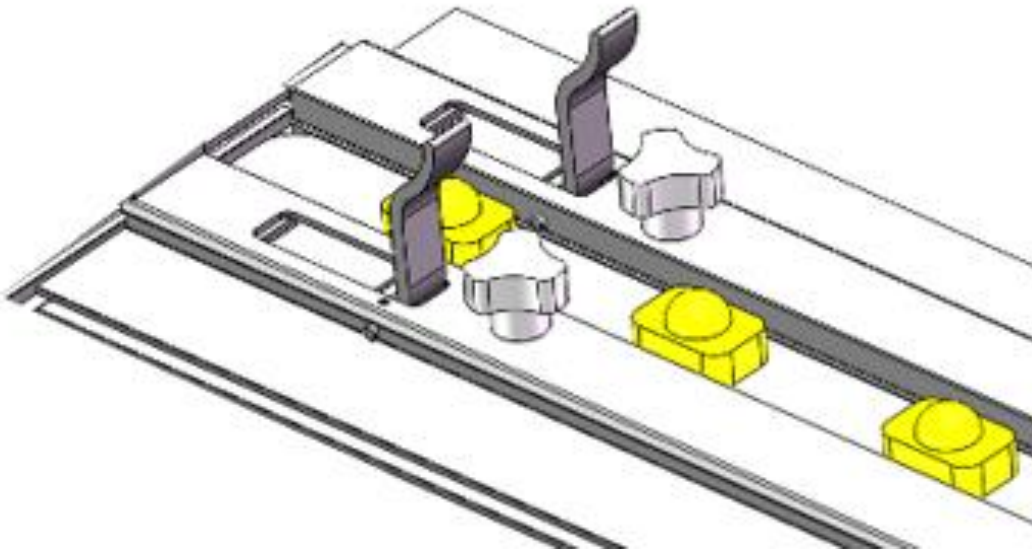
**2:** Screw in knobs to hold flat connecting brackets to frame panels.



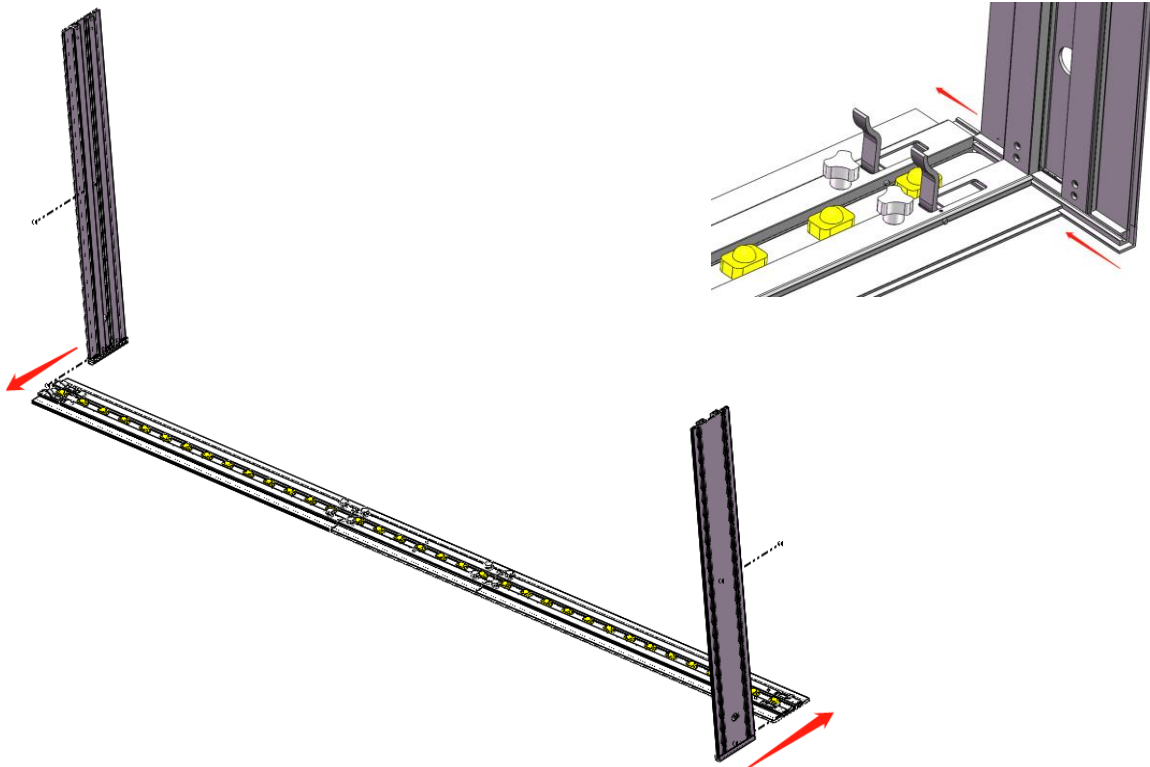
**3:** Insert flat connecting brackets into Frame Panels.  
Note plug orientation order above.



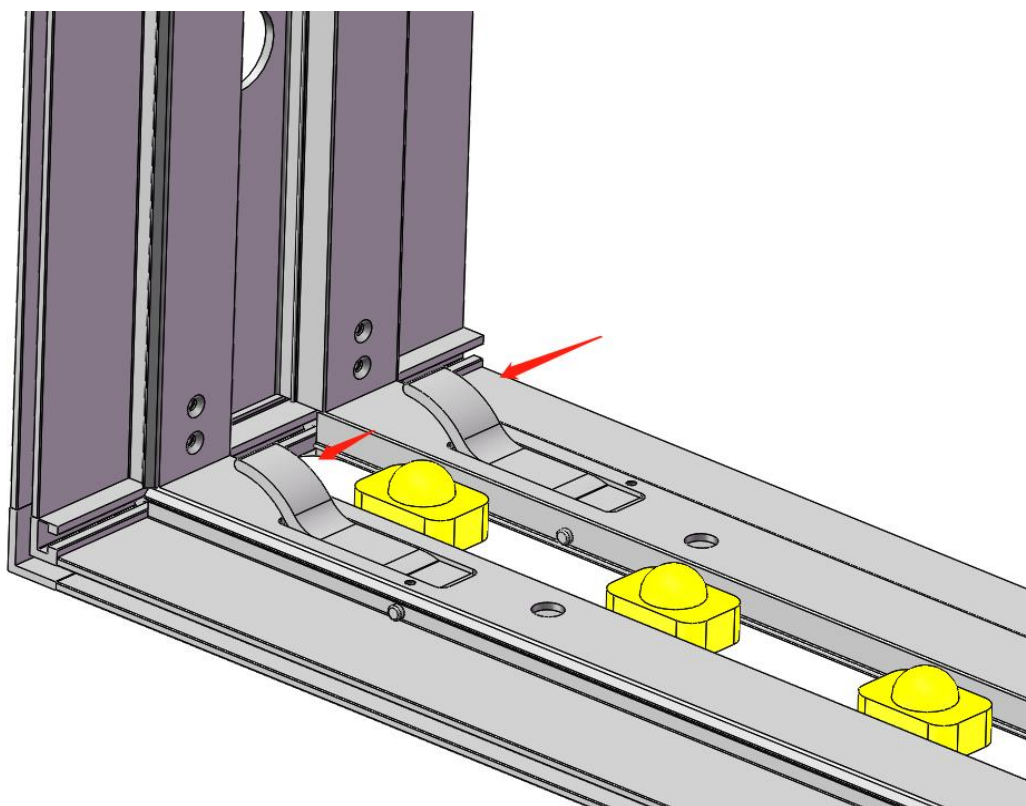
**4:** Screw in knobs to attach flat connecting brackets to frame panels.



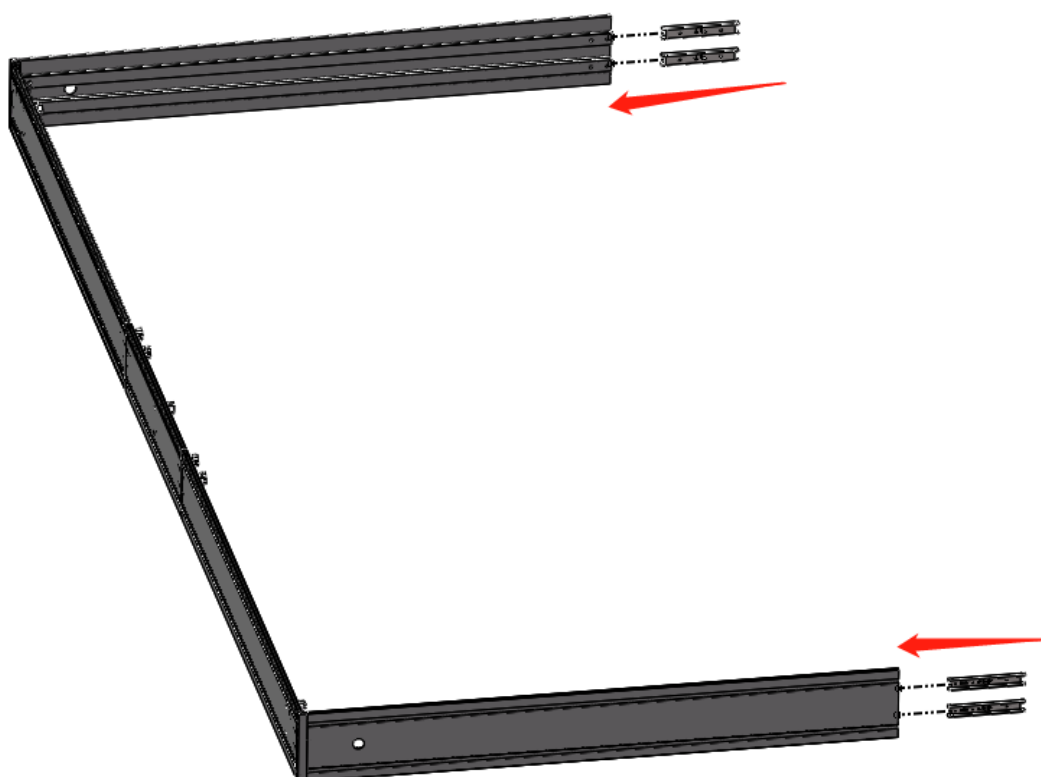
**5:** Open clips on Frame Panels with LED Light Strips to slide Side Frame Panels into place.



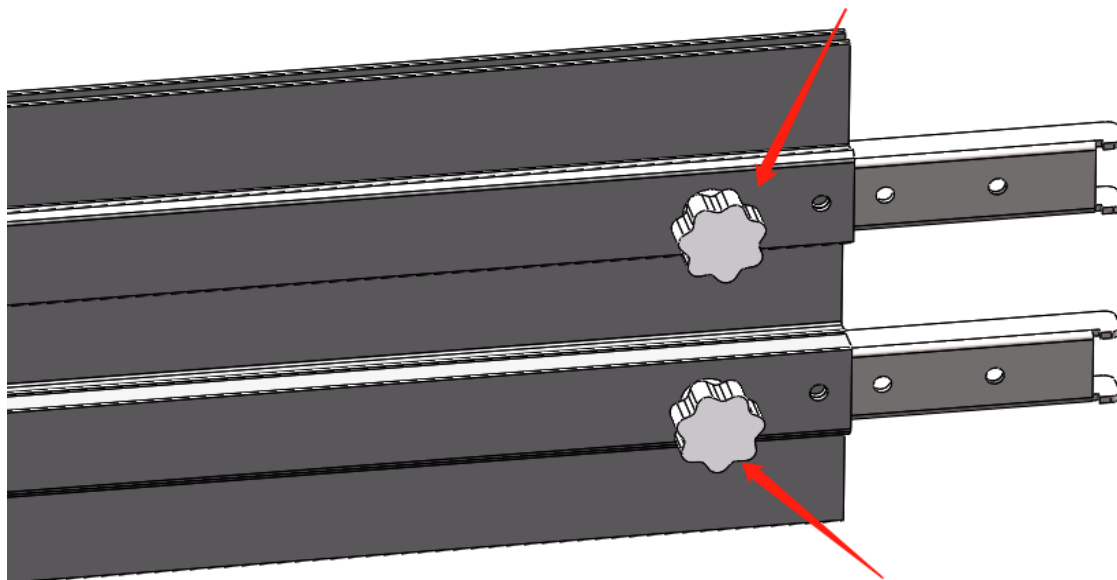
**6:** Slide side Frame Panels into Frame Panels with LED Light Strips.



**7:** Push down clips to secure.  
Repeat steps 1-7 for other half of the frame.

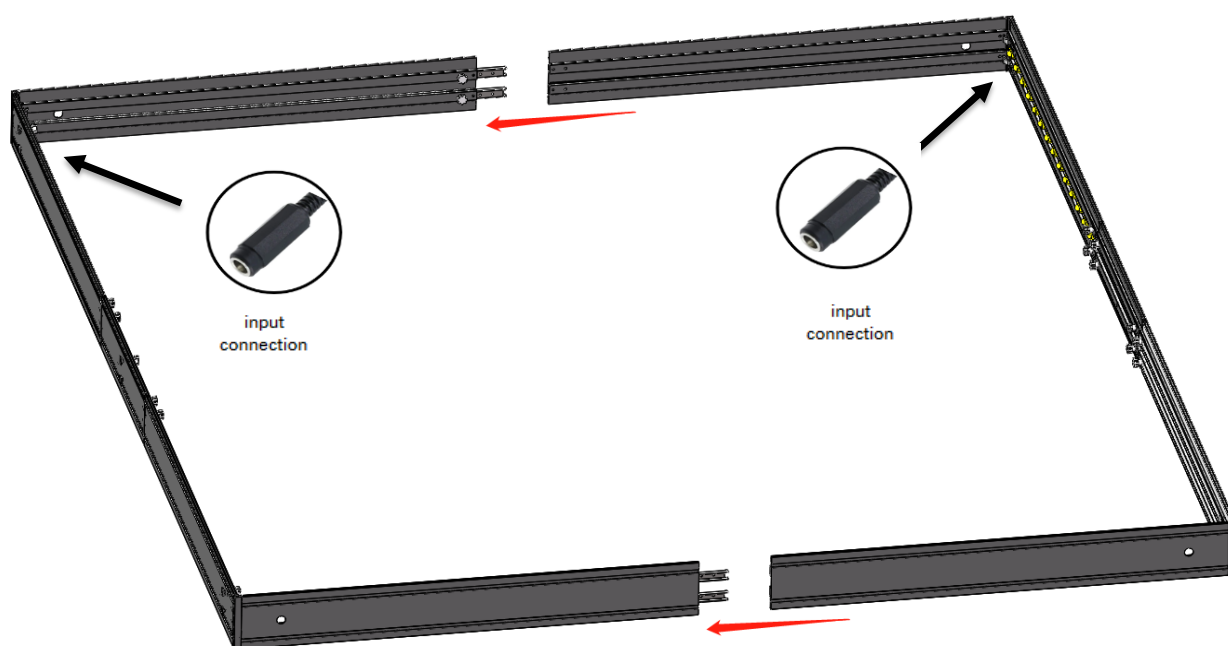


**8:** Insert flat connecting brackets into side Frame Panels.

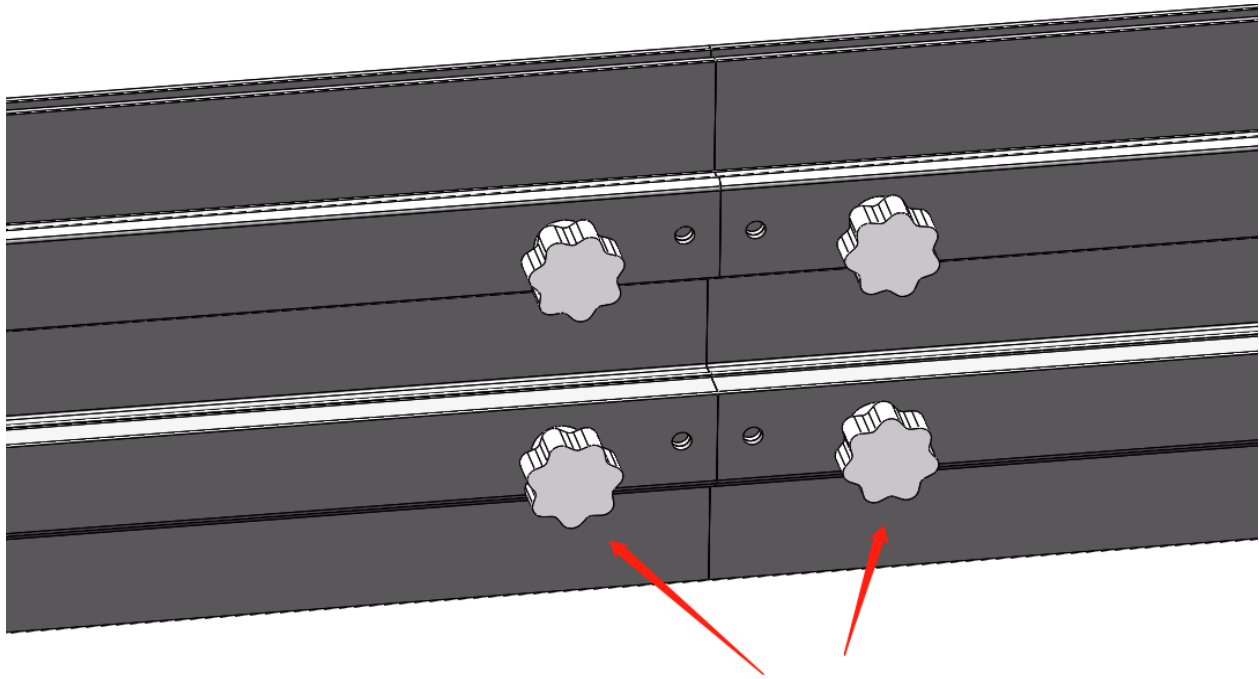


**9:** Screw in knobs to attach flat connecting brackets to frame panels.

\*Make sure LED light plug orientation is on the same side of frame.  
See diagram below:



**10:** Insert flat connecting brackets into side Frame Panels.

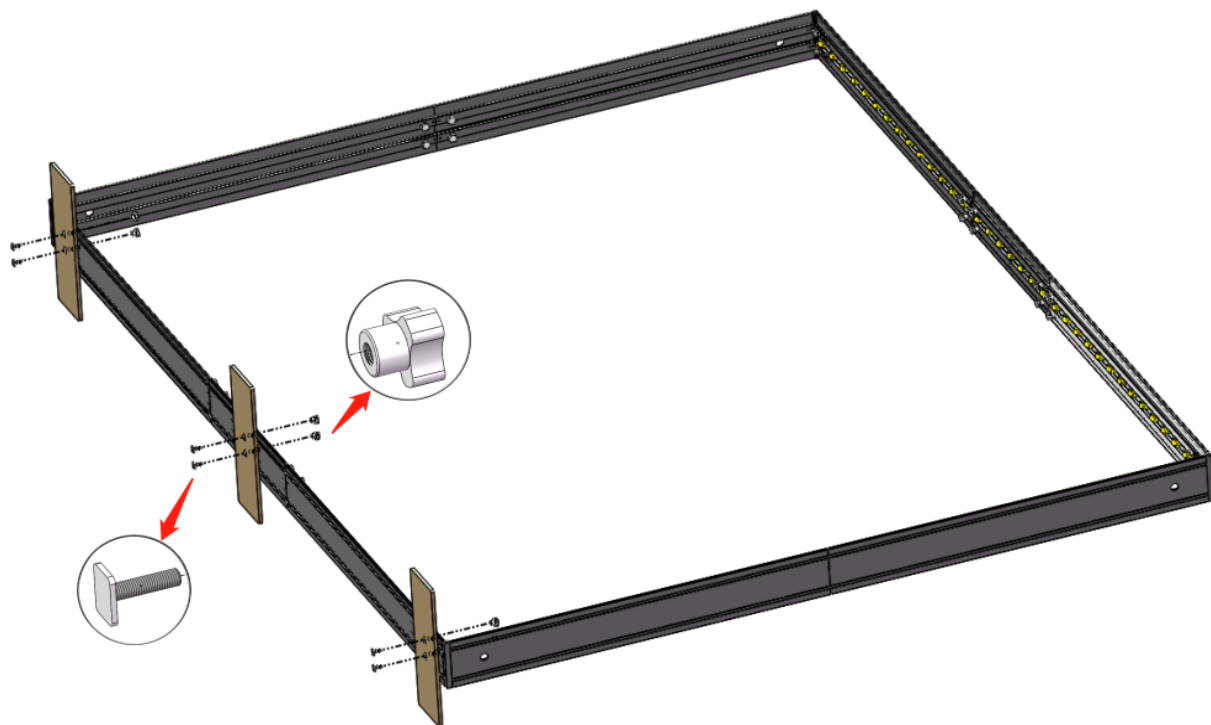


**11:** Screw in knobs to hold flat connecting brackets to frame panels.

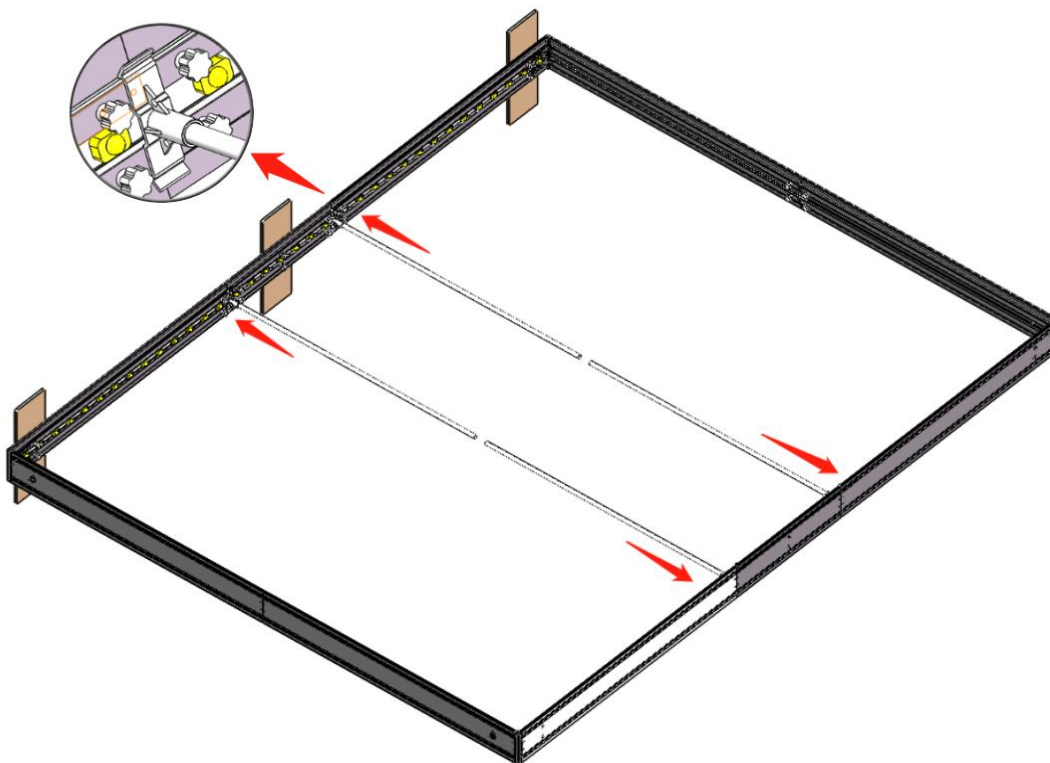


**12:** Align 3 feet with bottom of frame.

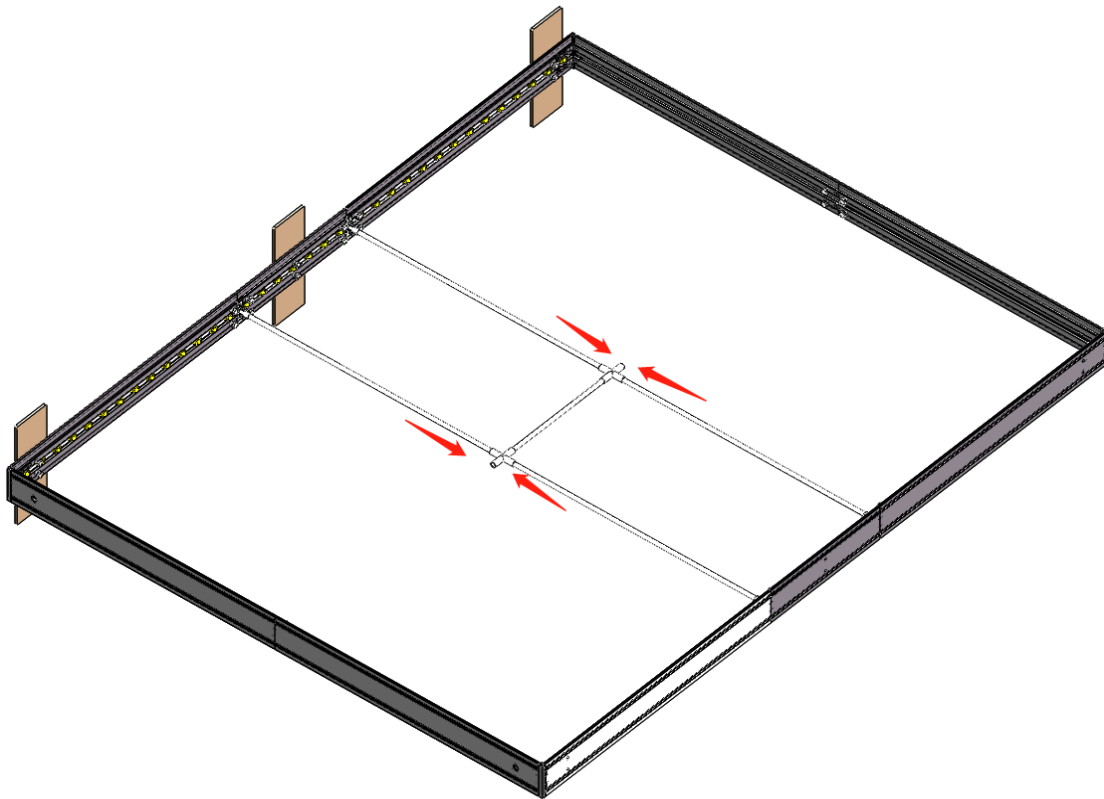




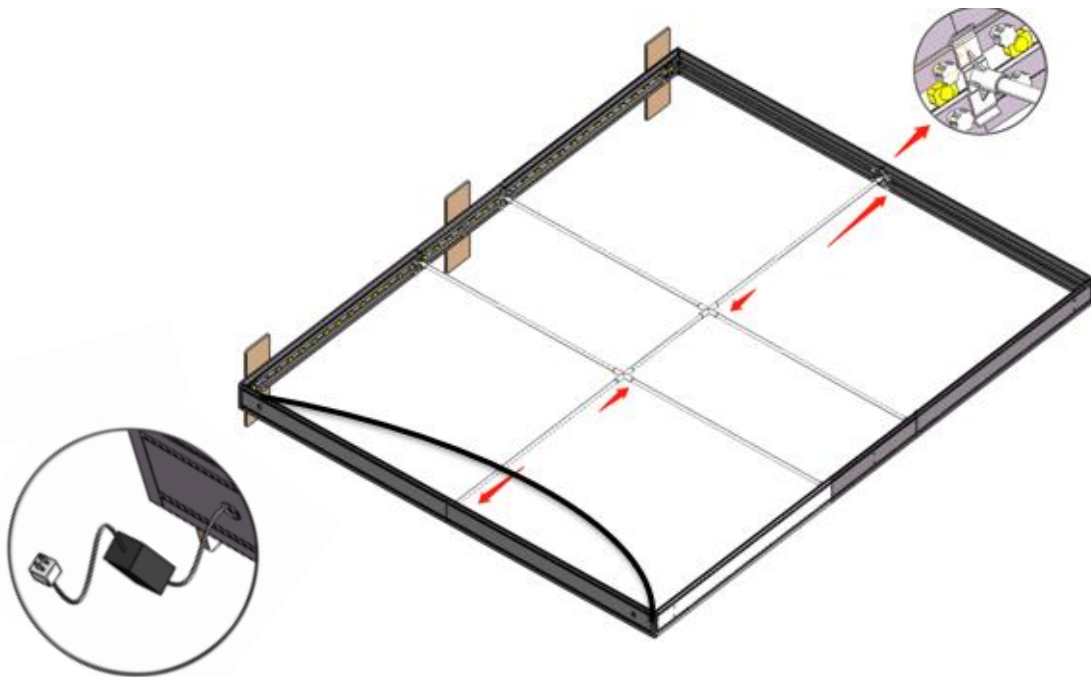
**13:** Secure feet with nuts and screws.



**14:** Clip Vertical Support Poles into Top and Bottom Frame Panels.

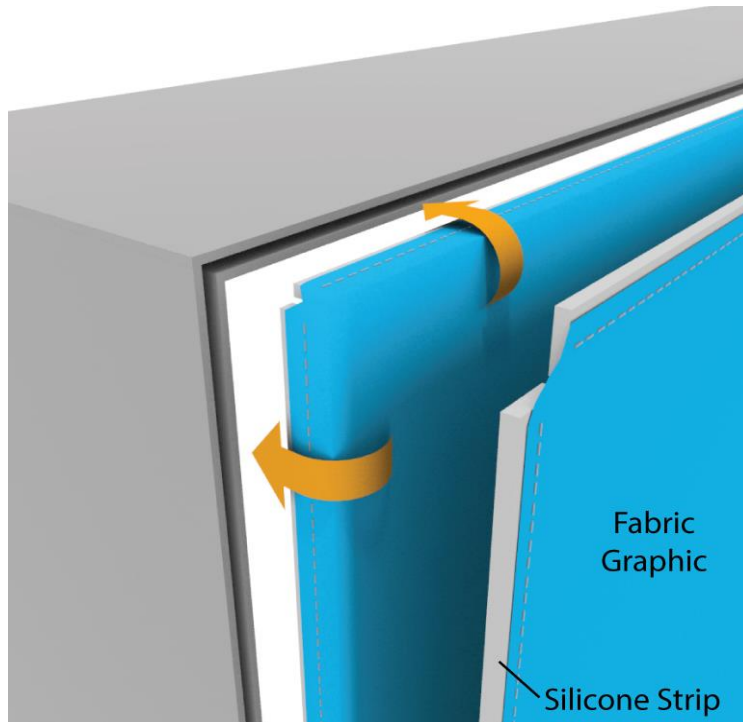


**15:** Attach Middle Horizontal Support Pole.

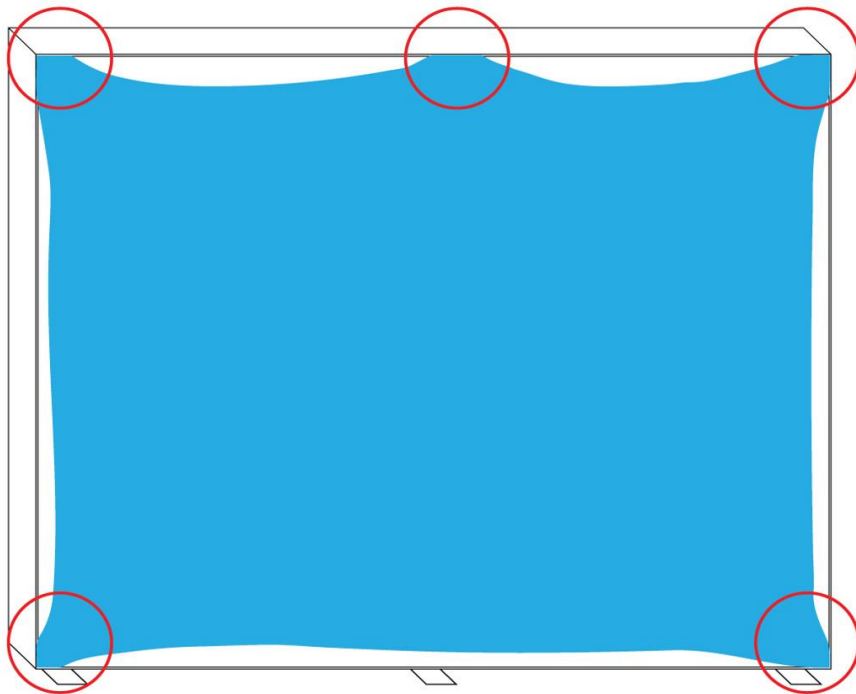


**16:** Clip Horizontal Support Poles into Left and Right Frame Panels.  
 Insert power splitter through rubber grommet one end at a time. Plug  
 in electrical cords to top and bottom of frame.  
 Be sure electrical cord is secure behind support pole clip.  
 Keep frame laying down.

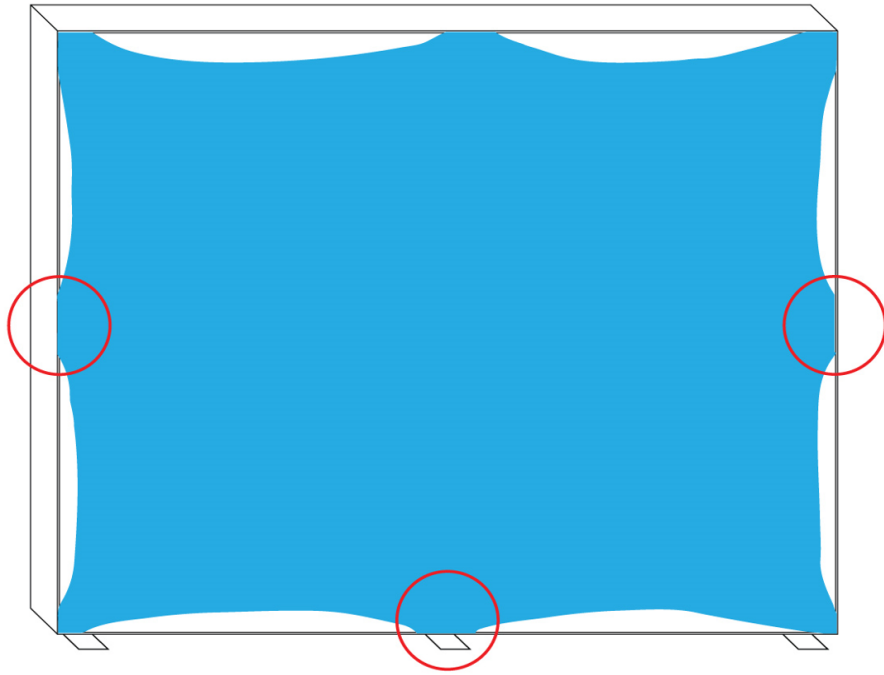
## 17. SEG Graphic Instructions



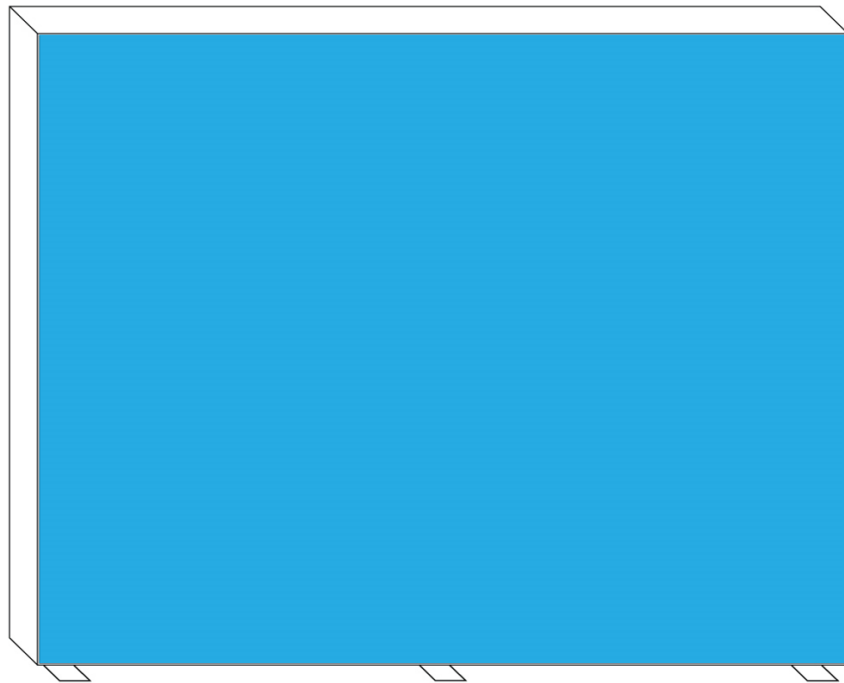
Silicone Edge Graphics (SEG) are installed by folding the graphic material, along with the silicone strip, and inserting it into the channel. Use your fingertip to aid in the installation process.



Begin at the top corner of the frame and tuck the graphic into the channel. Proceed to tuck the middle of the top and then the remaining corners of the graphic.

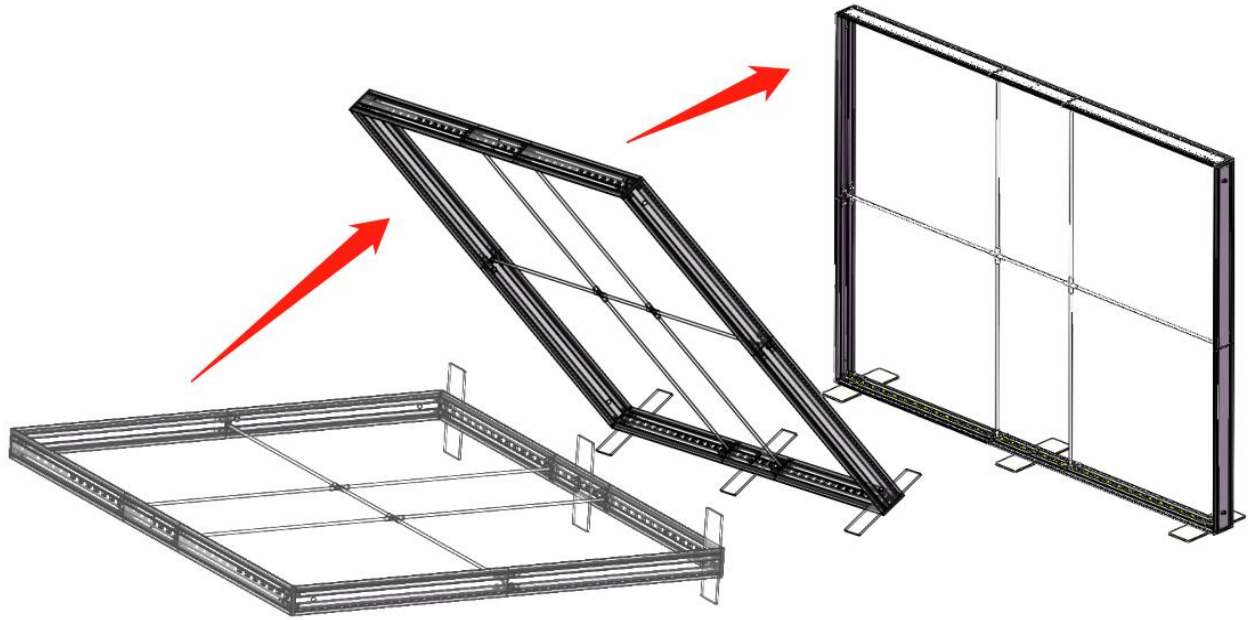


Move to the middle on each side.

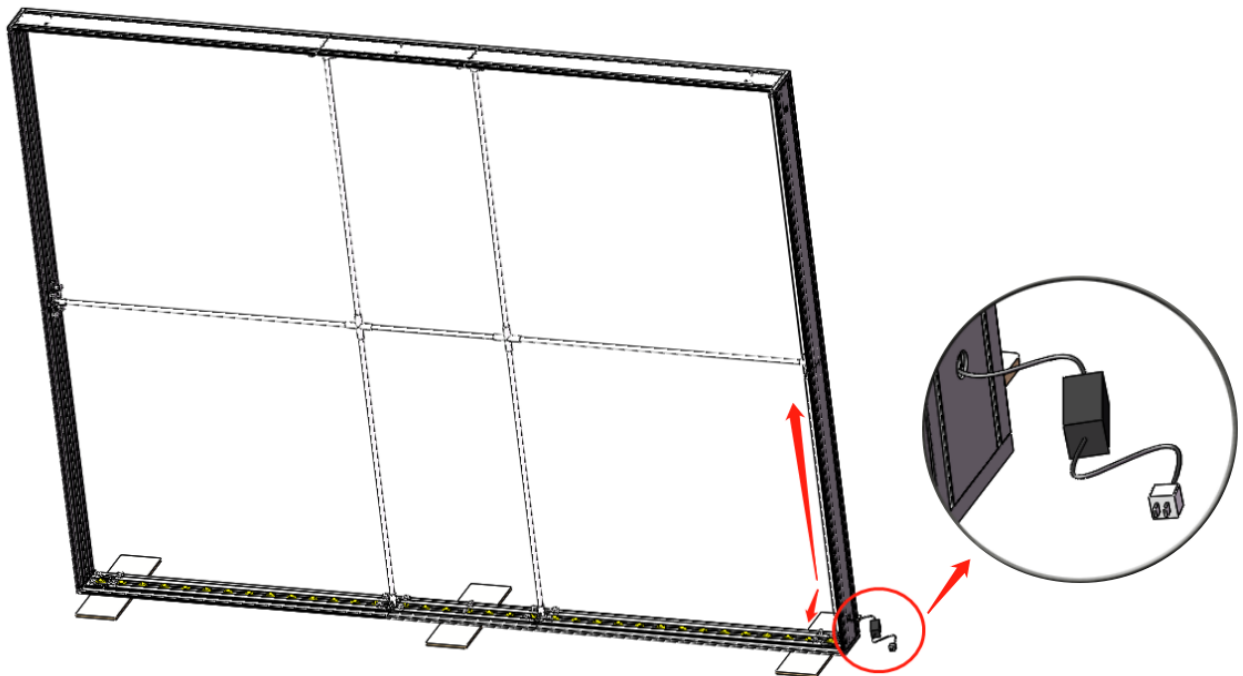


To avoid distorting the graphic, ensure that you do not stretch the silicone edge. Tuck the remaining perimeter of the graphic material into the channel.

Flip frame over and repeat installation steps for fabric on back of frame.



**18:** Using at least 2 people, carefully lift frame upright.



**19:** Plug in electrical power supply and enjoy your brilliant display.